

VLF2DAB

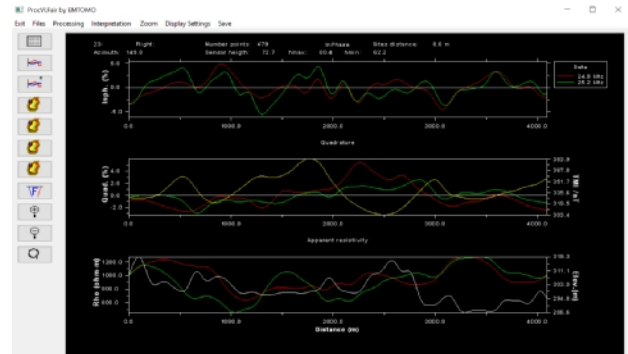
2D Inversion Software for Airborne/UAV VLF-EM Data

VLF2DAB is a software program for the 2D inversion of airborne/UAV VLF-EM data. The software incorporates sensor height and manages large datasets typical in airborne/UAV surveys.

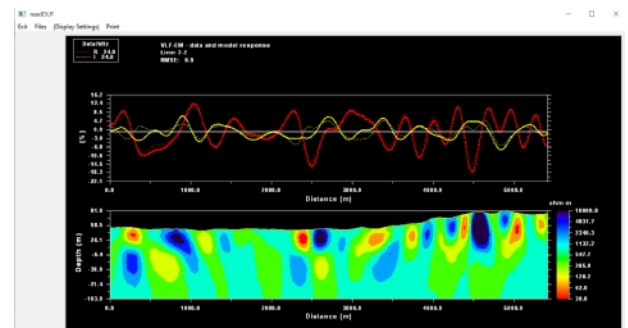
Main features of the software include:

- Data processing (linear and nonlinear filtering, data decimation);
- Qualitative interpretation (Fraser filter and Fraser section);
- 2D resistivity inversion using smooth Occam; and
- Outputs include ASCII files of all results. Files can be used with several graphical software programs; and
- TIFF plots and KML files of the models.

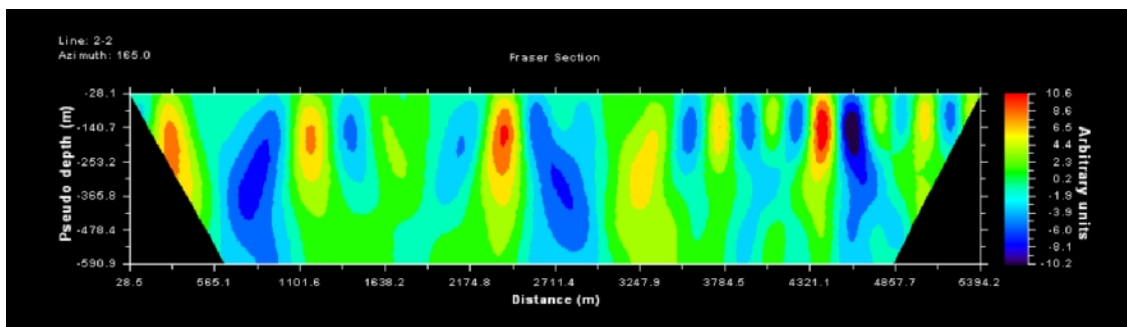
The software is 64-bit and runs on the Windows environment.



Data Display and Processing



2D Inversion of Airborne VLF-EM Data



Fraser Section

