



Adjustable Coupling



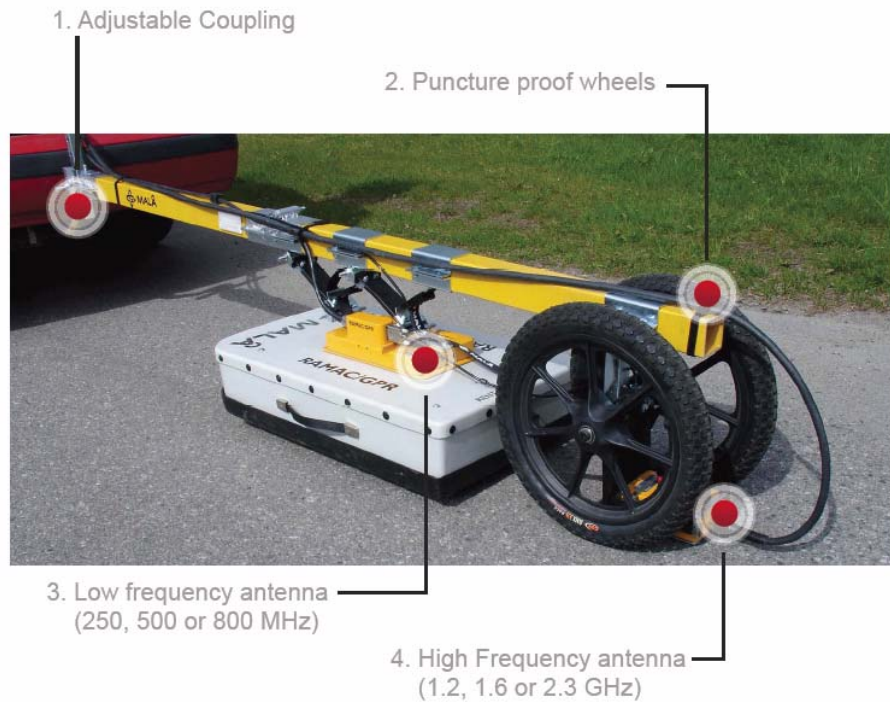
Adjustable survey height



Foldable fiberglass beam



Shock absorbent hinge mechanism.



## RoadCart

The RoadCart is a dedicated cart designed for high speed road measurements utilizing one or two shielded GPR antennas.

The RoadCart was designed in cooperation with experienced road investigation specialists to ensure safe and optimal performance at high speeds.

The RoadCart is constructed with affordable fiberglass beam to simplify transportation and shipping. This construction also enables users to shorten the RoadCart beam when performing single antenna measurements.

The RoadCart is adjustable for optimal road clearance and various towing hook heights, thus offering a level and smooth ride for the antennas, even at high speed.

Special spring loaded fixings hold the antennas securely in place on the RoadCart beam, however, should the antenna strike an obstacle in the road during data collection, these mechanisms are designed to move the antenna upwards and backwards to minimize impact shock.



## System Set-up

The RoadCart is typically configured with one high frequency antenna (1.2, 1.6 or 2.3 GHz) and one lower frequency antenna (250, 500 or 800 MHz) allowing the user to gather information from a range of depths to include the entire road construction, i.e. pavement, supportive layers and base.

It is recommended to use the RoadCart with the Professional Explorer (ProEx) system. The ProEx is a dual channel system and can therefore operate two antennas simultaneously at high speed, making it perfectly compatible with optimal RoadCart antenna set-up.

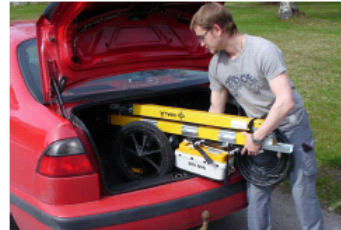
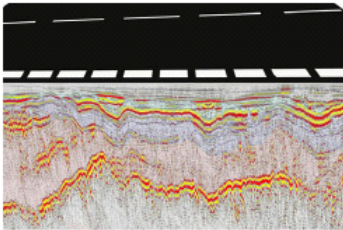
For single antenna use, the RoadCart can also be used with the CX (using 1.2, 1.6 or 2.3GHz antenna) or X3M Control Unit (using 250, 500 or 800MHz antenna)

## Features

The design and construction of the RoadCart is made for everyday usage featuring:

- Shock absorbent design to protect antennas
- Fully adjustable to optimize data collection
- Flexible design supporting various coupling heights
- Compact and foldable construction for easy transportation

**Note:** the RoadCart should always be used in accordance with any relevant local, national or regional legislation or guidelines.



## Technical Specification

### Dimensions (cm)

Unpacked: 130 (L) x 30 (W) x 50 (D)

Shipping box: 140 (L) x 40 (W) x 55 (D)

### Weight (kg)

Unpacked: 21

Packed (box): 37

Wheel size: 16"

Wheel type: puncture proof

Distance encoder: included

