

FULLWAVE DESIGNER TO DESIGN YOUR OWN SURVEY WITH FULLWAVER SYSTEMS

Place rapidly your systems on a georeferenced map, locate your V-Fullwavers electrodes and injection places. Check that the report points are located inside your target. Check that all depths are investigated and that the maximal investigation depth is greater than the one of the target. Create rapidly images and schemes for your reports and export a datasheet containing all electrodes location for a quick and accurate setup by low qualified staff.

DESIGN YOUR
SURVEY ON A GRID

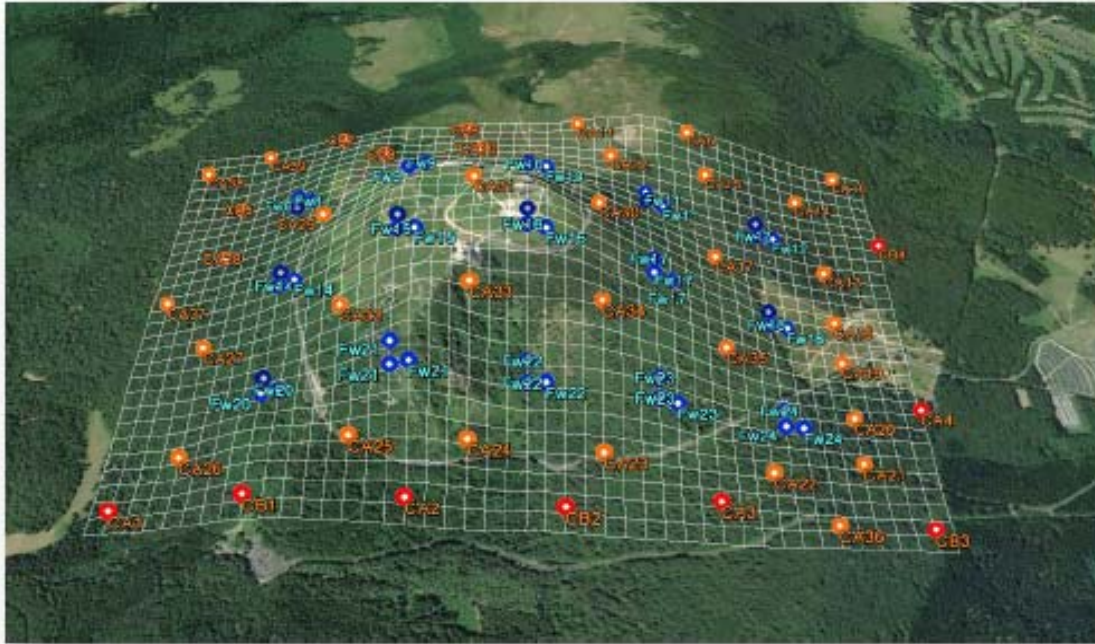
VISUALIZE
ELECTRODE
LOCATION ON
GOOGLE EARTH

VISUALIZE REPORT
POINTS LOCATION

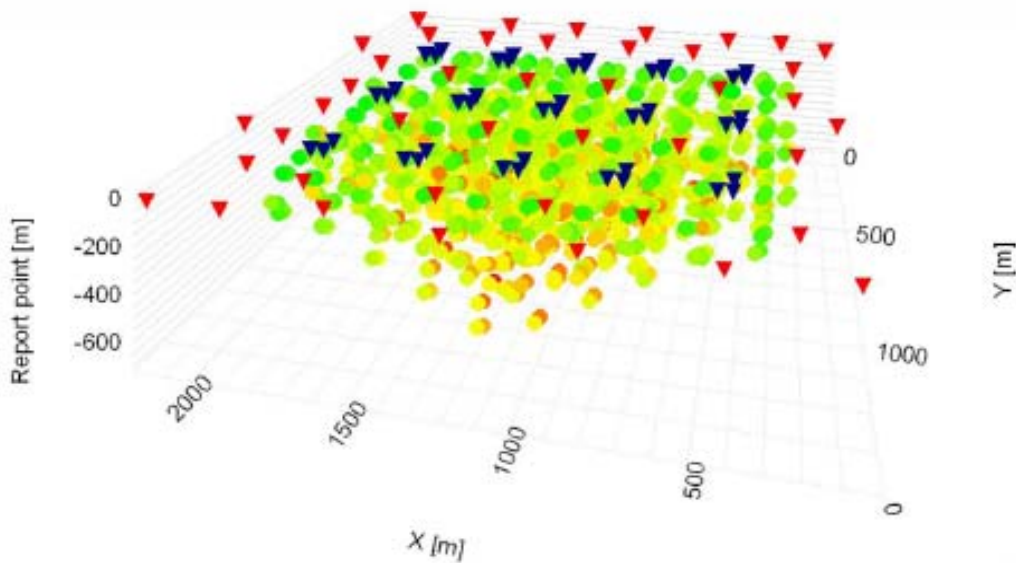
COMPUTE DEPTH OF
INVESTIGATION AND
CHECK IF THE
TARGET IS REACHED

GENERATE
DATASHEET WITH
ELECTRODE
COORDINATE FOR AN
QUICK AND
ACCURATE SETUP





Visualize electrode coordinates on Google Earth© and check that each position is accessible



Visualize report points, depths of investigation and geometric factors of your survey

