

# CX Concrete Imaging System



Optional shoulder harness



Adjustable viewing angle



Several antenna options



Several encoder options

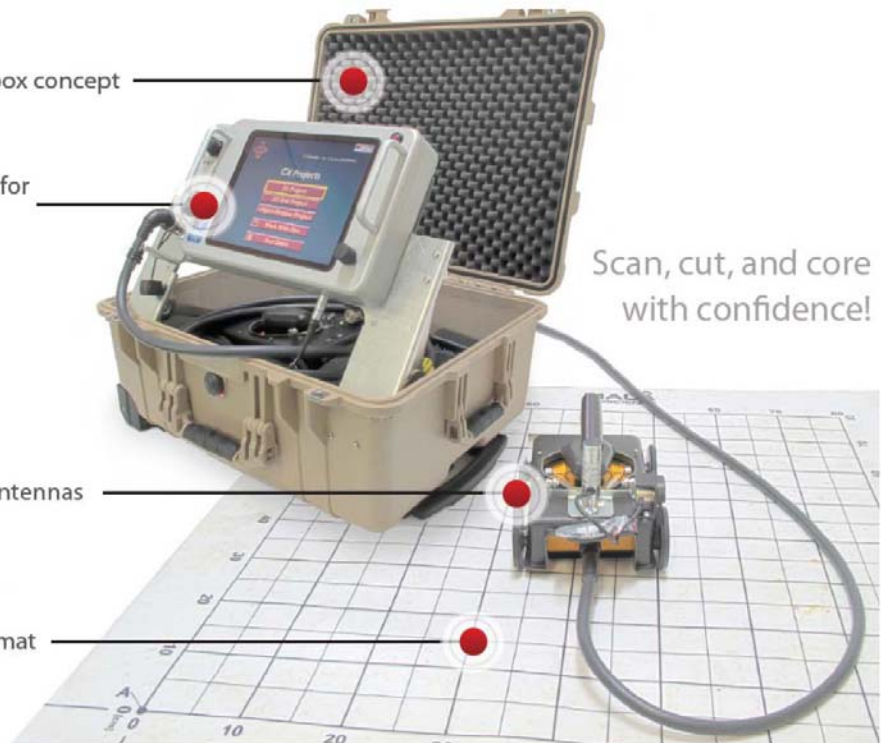
1. Portable, in-the-box concept

2. Screen optimized for out-door use

3. High frequency antennas

4. Transparent grid mat

Scan, cut, and core with confidence!



## Ground Penetrating Radar for Structural Investigations

The CX Concrete Imaging System is an easy to use, Ground Penetrating Radar (GPR) system designed for the non-destructive investigation and imaging of concrete and other structure.

Construction professionals involved in the cutting, coring or drilling of concrete structure require a safe and reliable means of inspecting work areas to locate and identify hidden features that could cause damage to machinery, or pose a danger to the operator or the structure itself during these activities.

The CX system allows you to scan concrete structure simply and safely in three different measurement modes; 2D-, 3D Grid- and Object Mapper- projects and present data clearly for real-time and in-the-box data acquisition, display and analysis. It is a quicker, safer and more cost effective option than competing systems or traditional radiographic testing methods.

With its simple user interface and large number of software features, the MALA CX System offers a unique powerful choice for your high frequency GPR investigations.



**Terraplus Inc.**

120 West Beaver Creek Rd, Unit #15  
Richmond Hill, ON, Canada, L4B 1L2

**terraplus.ca**

1.905.764.5505  
sales@terraplus.ca

## Main Applications:

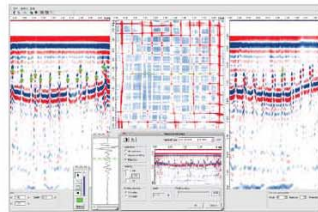
The MALÀ CX system is the tool of choice for those who need to quickly and easily investigate areas prior to cutting, coring or drilling. Other applications include:

- Concrete / Structure inspection
- Measure depth of cover or slab thickness
- Measure layer thickness
- Locate and map reinforcing support structure
- Locate non-metallic features, i.e. heating / water pipes
- Quality assessment & control
- Void detection

## Specific Features:

The product's simple yet ergonomic and field rugged design, intuitive user interface and clear display is testament to its success and it remains as the number one choice in its field.

- Minimal set-up for fast start-up
- LINUX operating system for fast and reliable processing
- Intuitive project driven GUI for enhanced work flow
- Stand-alone Windows processing software
- Project modes for 2D, 3D Grid and Object Mapper
- In-the-box processing to clear jobs on site
- Supports EM (50/60Hz) functionality
- Hyperbola fitting tool for velocity calibrations
- Full remote capabilities with the buttons on the antenna



## System Configuration:

The CX system comes as standard in a portable field rugged case, but can also be used in conjunction with an optional shoulder harness for greater portability and flexibility of use, depending on the application and user requirements.

The CX system was the World's first to combine GPR with the more common Electro-Magnetic (EM) technology by way of a fully integrated 50/60Hz sensor. This combination allows the detection of both metallic and non metallic objects and features, but also aids in the detection and location of metallic conductors energized with 50/60 Hz energy within the structure under investigation; thereby offering an additional element of safety to the system.

## Technical Specifications:

**Power supply:** External 12V or Li-Ion 12V/12Ah battery

**Operating time:** 6h with battery pack

**Operating temp:** -20° to +50°C or 0° to 120 °F

**Environmental:** IP65

**Display:** 10.4" Color TFT Transmissive LCD

**Dimensions:** 56 x 46 x 26 cm / 22" x 18" x 10" (in-the-box)

**Weight:** 19.5 kg / 42.9 lbs (in-the-box, including antenna)

**Antennas:** The MALÀ CX system fully supports the High Frequency (HF) Antenna range allowing the user to choose the best antenna for their given application and obtain unsurpassed accuracy and data clarity.

See High Frequency (HF) Antennas brochure.

