

RENTAL INVENTORY

*Instruments may be rented on a daily, weekly, or monthly basis.
Please contact us for current rates and availability.*

Table of Contents

Airborne / UAV Systems

Potassium Magnetometers/Gradiometers
Radiometrics
Electromagnetics (EM)
Ground Penetrating Radar (GPR)
Software for UAV Sensors

Borehole Logging – Integrated Systems

Data Loggers
Winches
Quick Link Probes
Stand-Alone Probes
Accessories
Borehole Logging Software

Borehole Logging – Dedicated Systems

Seismic

Electromagnetic (EM) Systems

Frequency-Domain EM
EM Software

Gravity

Gravity Meters

Ground Penetrating Radar (GPR)

Ground Exploration Systems
Utility Locating & Concrete Investigation Systems
3D Array
UAV GPR Systems
Accessories
GPR Software

Induced Polarization (IP)

Distributed Array
Receivers
Imaging/Switching Systems
Transmitters
IP Software

Laboratory Instruments

Gamma-Ray Spectrometers

Magnetometer / VLF Systems

Overhauser Magnetometers/Gradiometers
Potassium Magnetometers/Gradiometers
Combined Magnetometer/VLF Systems
VLF Software

Physical Property Measuring Systems

KT-10 Magnetic Susceptibility/Conductivity Meters
KT-20 Physical Property Measuring Systems
Accessories

Radiometric Systems

Gamma-Ray
Infrared
Accessories

Resistivity Systems

Resistivity Meters & ERT Imaging Systems
Land & Marine Accessories
Capacitively-Coupled Resistivity
Resistivity Software

Seismic Systems

Seismographs
Seismic Accessories
Distributed Array
Borehole
Seismic Software

Software

Borehole Logging Software
EM Software
GPR Software
IP/Resistivity Software
Seismic Software

Last Updated April 2026



Terraplus Inc.

120 West Beaver Creek Rd, Unit #15
Richmond Hill, ON, Canada, L4B 1L2

terraplus.ca

1.905.764.5505
sales@terraplus.ca

Airborne / UAV Systems

Drone-borne geophysical instruments for use with customer supplied UAVs.

Potassium Magnetometers/Gradiometers

- DRONEmag UAV Magnetometer
with GSMP-35U sensor, GPS, laser altimeter, and radio link
 - Available with GSMP-25U sensor for international projects **NEW**
- DRONEgrad UAV Vertical Gradiometer
with 2 x GSMP-35U sensors, GPS, laser altimeter, and radio link

DRONEmag UAV Magnetometer



Radiometrics

- D230A UAV Gamma-Ray Spectrometer with 2 BGO detectors, GPS, and spectral assay module
 - Available with standard (2"x2") or larger (2"x4") detectors
 - Standard (2"x2") configuration available with telemetry module

D230A UAV Spectrometer



Electromagnetics (EM)

- GEM-2 Multi-Frequency EM Sensor with data logger & GPS
 - Configurable for UAV or ground surveys

Ground Penetrating Radar (GPR)

- GeoDrone 600 MHz UAV GPR System with GPS and controller **NEW**

GeoDrone 600 UAV GPR System



Software for UAV Sensors

- EM4SOIL Inversion Software for single and multi-frequency EM instruments



Borehole Logging – Integrated Systems

A range of geophysical probes that cover a broad scope of measurement parameters in either stackable Quick Link (QL) or stand-alone versions. All probes are compatible with our series of data loggers and winches.

Data Loggers

- Scout Pro Data Logger
- Matrix Data Logger

Scout Pro



Matrix



Winches

- Pathfinder Winch with 333m of 1/8" diameter single conductor cable **NEW**
- 4MXA-1000 Winch with 500m of 1/8" diameter single conductor cable
- 4MXB-1000 Winch with 500m of 3/16" diameter four conductor cable **NEW**
- 4MXC-1000 Winch with 1000m of 1/8" diameter single conductor cable

4MXA-1000 Winch



Quick Link Probes

- QL40-ABI-2G Acoustic Televiewer
- QL40-OBI-2G Optical Televiewer (available with or without UV lights)
- QL40-FWS Full Waveform Sonic, Broadband (1Tx – 3Rx)
- QL40-IP Induced Polarization / Resistivity
- QL40-CAL 3-Arm Caliper
- QL40-FTC Fluid Temperature & Conductivity
- QL40-SFM Spinner Flowmeter **NEW**
- QL40-GR Total Count Natural Gamma with GJ Calibration
- QL40-SGR-2G Spectral Gamma with CeBr3 Detector

QL40-OBI-2G



Stand-Alone Probes

- HFP-2293 Heat-Pulse Flowmeter
- 2PIA-1000 Induction
- 2BSF-1000 Magnetic Susceptibility
- 2PCA-1000 3-Arm Caliper
- 40GRP-1000 Resistivity, SPR, SP, Natural Gamma
- 40LGR-1000 Gamma, SP, SPR
- 2GHF-1000 Triple Gamma with GJ Calibration
- 40TGU-1000 2nd Generation Triple Gamma with GJ Calibration **NEW**
- 2SNA-1000-S Spectral Gamma

Heat-Pulse Flowmeter



Terraplus Inc.

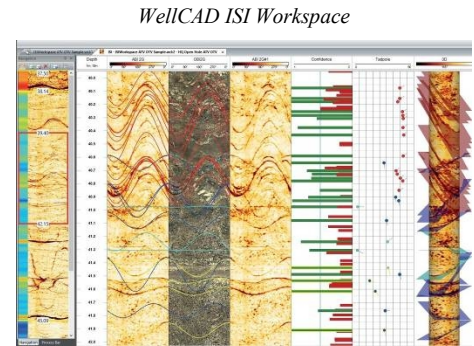
120 West Beaver Creek Rd, Unit #15
Richmond Hill, ON, Canada, L4B 1L2

terraplus.ca

1.905.764.5505
sales@terraplus.ca

Accessories

- 2DWA-1000 Dummy Weight
- QL40-GO4 Gearhart-Owen 4-conductor probe top for pairing Quick Link probes with 4MXB-1000 or customer-owned 4-conductor winches
- 12 VDC to 1100 Watt Power Inverter for operating a borehole logging system from a 12V battery (instead of a motor generator) **NEW**



Borehole Logging Software

- WellCAD[®] v6 with the following modules available:
 - Basic Module with Reader & Crossplot
 - Image & Structure Interpretation (ISI)
 - Full Waveform Sonic (FWS) Processing
 - LIS/DLIS Import
 - Deviation Data Display

Borehole Logging – Dedicated Systems

Dedicated borehole logging systems for seismic applications.

Seismic

- Borehole Seismic System with BHG-3 three-component borehole geophone and BHGC-4 controller
 - Available with 50m or 100m cable

BHG-3 Borehole Geophone



Electromagnetic (EM) Systems

A range of frequency-domain EM instruments.

Frequency-Domain EM

- GEM-2 Multi-Frequency EM Sensor with data logger & GPS
 - Configurable for ground or UAV surveys
- PROMIS Horizontal Loop EM (HLEM) System with three components (vertical and two horizontal) and EMSYS software **

GEM-2 Multi-Frequency EM Sensor



EM Software

- EM4SOIL Inversion Software for single and multi-frequency EM instruments
- IX1D Inversion Program **

PROMIS HLEM System



Gravity

Relative gravimeters featuring next-generation MEMS gravity sensing technology.

Gravity Meters

- GAIA-Field MEMS Gravimeter with Integrated Gimbal **NEW**

GAIA-Field Gravimeter



*** Available from GEORENT, a Terraplus-Iris company*



Ground Penetrating Radar (GPR)

GPR systems for ground exploration, utility locating, concrete investigations, 3D array, and UAV surveys.

Ground Exploration Systems

- Ground Explorer (GX) with the following antennas:
 - 80 MHz, 160 MHz, 450 MHz, and 750 MHz
 - Available with Push or Pull Accessories
- ProEx Control Unit with the following antennas:
 - 25 MHz, 50 MHz, and 100 MHz Rough Terrain Antennas



Utility Locating & Concrete Investigation Systems

- Easy Locator Core with Standard Cart (450 MHz)
 - Available with Rough Terrain Cart Mini
- Easy Locator HDR Pro WideRange with Pro Cart & Rough Wheels (effective bandwidth range of 80-950 MHz)
- ProEx Control Unit with 1.6 GHz Antenna for Concrete Investigations

Easy Locator Core with Reach External GPS



3D Array

- MIRA Compact 3D GPR System with Cart (500 MHz), **NEW**
capable of collecting up to 30 data channels simultaneously
 - Available with Tow Hitch Carrier for towing behind a vehicle

UAV GPR Systems

- GeoDrone 600 MHz UAV GPR System with GPS and controller **NEW**

Accessories

- Emlid Reach RS2/RS2+ RTK GPS (Base & Rover) with Survey Tripod

GPR Software

- MALÅ Vision GPR Processing & Analysis Software
- RadExplorer 2D Processing Software
- Object Mapper Utility Mapping/GIS Software
- Reflex W 2D/3D with GPR Module

MIRA Compact



Terraplus Inc.

120 West Beaver Creek Rd, Unit #15
Richmond Hill, ON, Canada, L4B 1L2

terraplus.ca

1.905.764.5505
sales@terraplus.ca

Induced Polarization (IP)

A range of IP receivers and transmitters for both traditional and distributed array surveys.

Distributed Array

- Full Waver Distributed Wireless IP System **
 - 21 x V-Full Waver 2-Channel Receivers;
 - 2 x I-Full Waver Recorders; and
 - Full Wave Designer and Full Wave Viewer Software

Receivers

- Elrec Terra 20-Channel Time Domain IP Receiver with 100% Duty Cycle Capability **
- Elrec Pro 10-Channel Time Domain IP Receiver with Full Waveform Recording **

Imaging/Switching Systems

- Syscal Terra Switch 96 with External Transmitter Option **
 - Equivalent to an Elrec Terra Switch 96 (20 Channels)

Transmitters

- TIP 6kW IP Transmitter **
 - Generates up to 3000V, 15A (Motor Generator Required)
- TIPIX 3kW IP Transmitter **
 - Generates up to 2500V, 13A (Motor Generator Required)

IP Software

- RES3DINV 3D Inversion Program **
- RES2DINV 2D Inversion Program **
- IX1D Inversion Program **

Full Wavers



Elrec Terra IP Receiver



TIP 6kW IP Transmitter



** Available from GEORENT, a Terraplus-Iris company



Laboratory Instruments

Instruments for collecting radiometric data in a laboratory environment.

Gamma-Ray Spectrometers

- CORELA Spectral Gamma-Ray Logger for drill core scanning **NEW**
 - Available with 1 or 2 measuring segments

CORELA



Magnetometer / VLF Systems

A range of Overhauser and Potassium magnetometers for ground and UAV surveys. A base station is recommended to remove the effects of daily magnetic drifts (diurnals) that affect overall data quality.

Overhauser Magnetometers/Gradiometers

- GSM-19 Overhauser Magnetometer (Base Station)
- GSM-19W Walking Overhauser Magnetometer with GPS (SBAS/Glonass)
- GSM-19GW Walking Overhauser Gradiometer with GPS (SBAS/Glonass)

GSM-19 Overhauser Magnetometer



Potassium Magnetometers/Gradiometers

Ground Instruments

- GSMP-35 Potassium Magnetometer with GPS (SBAS/Glonass)
- GSMP-35G Potassium Gradiometer with GPS (SBAS/Glonass)

GSMP-35 Potassium Magnetometer



UAV Instruments

- DRONEmag UAV Potassium Magnetometer with GSMP-35U sensor, GPS, laser altimeter, and radio link
 - Available with GSMP-25U sensor for international projects **NEW**
- DRONEgrad UAV Potassium Vertical Gradiometer with 2 x GSMP-35U sensors, GPS, laser altimeter, and radio link

DRONEgrad UAV Vertical Gradiometer



Combined Magnetometer/VLF Systems

- GSM-19WV Walking Overhauser Magnetometer with point-by-point VLF and GPS (SBAS/Glonass)
- GSM-19WVW Walking Overhauser Magnetometer with Walking VLF and GPS (SBAS/Glonass) **NEW**

GSM-19WV Combined Magnetometer/VLF



VLF Software

- VLF2DMF Inversion Software for Ground VLF Instruments



Physical Property Measuring Systems

Physical property measuring systems for magnetic susceptibility, conductivity, IP/resistivity, and density.

KT-10 Magnetic Susceptibility/Conductivity Meters

- KT-10 Magnetic Susceptibility Meter with Circular Sensor
 - Available with Plus upgrade
- KT-10R Magnetic Susceptibility Meter with Rectangular Sensor
- KT-10 S/C Magnetic Susceptibility / Conductivity Meter with Circular Sensor
 - Available with Plus and Cx upgrades
- KT-10R S/C Magnetic Susceptibility / Conductivity Meter with Rectangular Sensor

KT-10



KT-20 Physical Property Measuring Systems

- KT-20 S/C Magnetic Susceptibility / Conductivity Meter with Density
 - Available with various Circular, Rectangular, and Curved Sensors
- KT-20 3-Frequency, Large Diameter Sensor (3F-32)
- KT-20 IP Induced Polarization (IP) / Resistivity Module
 - Available with Small or Large Sample Holders

KT-20 S/C



KT-20 Sensor Shapes



Accessories

- Garmin GLO 2 External GPS Receiver
 - Compatible with KT-10 line of products (KT-20 has integrated GPS)

KT-20 IP/Resistivity Module with Small Sample Holder



Radiometric Systems

A range of gamma-ray and infrared radiometric systems for deployment in the field, in a laboratory, or on a UAV.

Gamma-Ray

Handheld Instruments

- RS-121 Scintillometer with NaI detector
- RS-125 Spectrometer with NaI detector
- RS-225 2nd Generation Spectrometer with NaI detector **NEW**
- RS-230 Spectrometer with BGO detector
- RS-232 2nd Generation Spectrometer with BGO Detector **NEW**

RS-125 & RS-230 Gamma-Ray Spectrometers



Laboratory Instruments

- CORELA Spectral Gamma-Ray Logger for drill core scanning **NEW**
 - Available with 1 or 2 measuring segments

RS-232 2nd Generation Gamma-Ray Spectrometer



UAV Instruments

- D230A UAV Gamma-Ray Spectrometer with 2 BGO detectors, GPS, and spectral assay module
 - Available with standard (2"x2") or larger (2"x4") detectors
 - Standard (2"x2") configuration available with telemetry module

Infrared

- OreXpress Near Infrared (NIR) Spectrometer with a spectral range of 350-2500nm and EZ-ID Software

OreXpress NIR Spectrometer



Accessories

- Garmin GLO 2 External GPS Receiver
 - Compatible with RS-121, RS-125, and RS-230 (RS-225 & RS-232 have integrated GPS)



Resistivity Systems

Galvanic and capacitively-coupled resistivity systems for ground and marine surveys.

Resistivity Meters & ERT Imaging Systems

- Syscal Terra Switch 96 Resistivity Imaging System (20 Channels, 250W) **
- Syscal Pro Switch 96 Resistivity Imaging System (10 Channels, 250W) **
- Syscal R1 Plus Resistivity Meter (2 Channels, 200W) **

Land & Marine Accessories

- Land ERT accessories, including multicore cables with 5m and 10m spacing, connecting boxes, cord clips, and electrodes for Switch 96 Systems **
- Marine resistivity accessories, including marine cable with 13 graphite electrodes, 5m spacing, 12m lead-in, GPS Garmin 188, Echo Sounder, and Sysmar software **

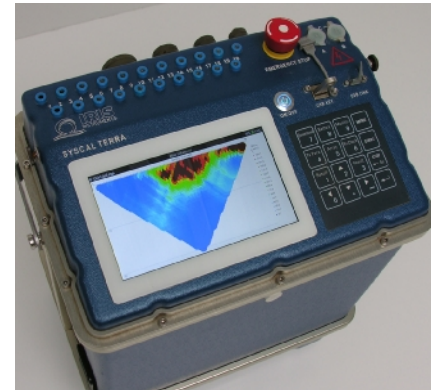
Capacitively-Coupled Resistivity

- OhmMapper Capacitively-Coupled Resistivity System with 1 to 5 Receivers
 - Available with Hemisphere A222 SMART GPS Antenna

Resistivity Software

- RES3DINV 3D Inversion Program **
- RES2DINV 2D Inversion Program **
- IX1D Inversion Program **

Syscal Terra Switch



Syscal Pro Switch



OhmMapper with 1 Receiver



*** Available from GEORENT, a Terraplus-Iris company*



Seismic Systems

Seismic systems for surface wave (MASW), refraction, HVSR, and downhole surveys.

Seismographs

- Geode 24-Channel Seismograph

Geode 24-Channel Seismograph



Seismic Accessories

- 24-Takeout Spread Cables with 5m and 10m spacing
- 30 x 4.5 Hz vertical geophones

Distributed Array

- Atom-3C Passive Seismic System with 2 Hz three-component geophone for HVSR surveys

Atom-3C Passive Seismic System



Borehole

- Borehole Seismic System with BHG-3 three-component borehole geophone and BHGC-4 controller
 - Available with 50m or 100m cable

Seismic Software

- SeisImager/SW Surface Wave Analysis Software
- SeisImager/2D Refraction Software
- SeisImager/DH Downhole Software
- Reflex W 2D/3D with Refraction/Reflection Module



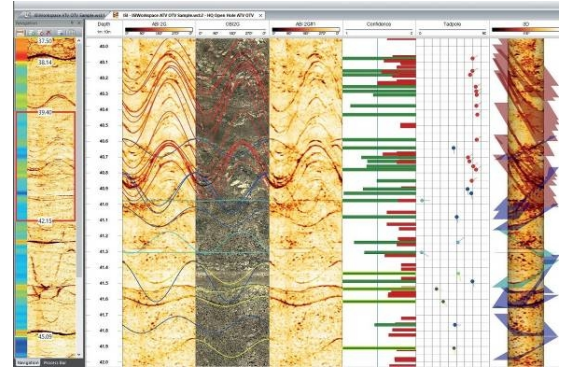
Software

A range of software programs to visualize, process, interpret, and manage geophysical data.

Borehole Logging Software

- WellCAD[®] v6 with the following modules available:
 - Basic Version with Reader & Crossplot
 - Image & Structure Interpretation (ISI) Workspace
 - Full Waveform Sonic
 - LIS/DLIS Import
 - Deviation Data Display

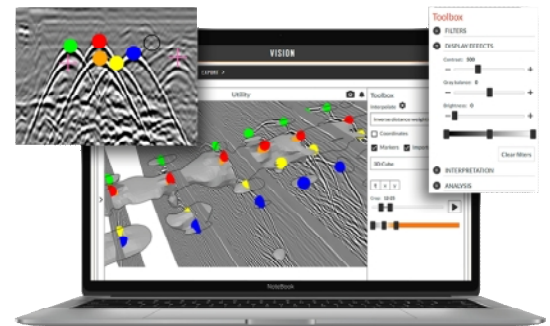
WellCAD ISI Workspace



EM Software

- VLF2DMF Inversion Software for Ground VLF Instruments
- EM4SOIL Inversion Software for single and multi-frequency EM instruments
- IX1D Inversion Program **

MALÅ Vision GPR Software



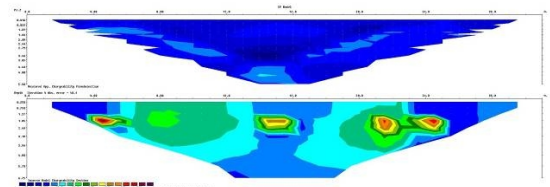
GPR Software

- MALÅ Vision GPR Processing & Analysis Software
- RadExplorer 2D Processing Software
- Object Mapper Utility Mapping/GIS Software
- Reflex W 2D/3D with GPR Module

IP/Resistivity Software

- RES3DINV 3D Inversion Program **
- RES2DINV 2D Inversion Program **
- IX1D Inversion Program **

RES2DINV 2D Inversion Software



** Available from GEORENT, a Terraplus-Iris company



Seismic Software

- SeisImager/SW Surface Wave Analysis Software
- SeisImager/2D Refraction Software
- SeisImager/DH Downhole Software
- Reflex W 2D/3D with Refraction/Reflection Module

SeisImager Seismic Software

