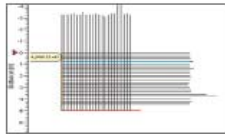


Object Mapper™ Software



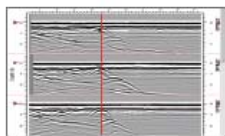
1. File management



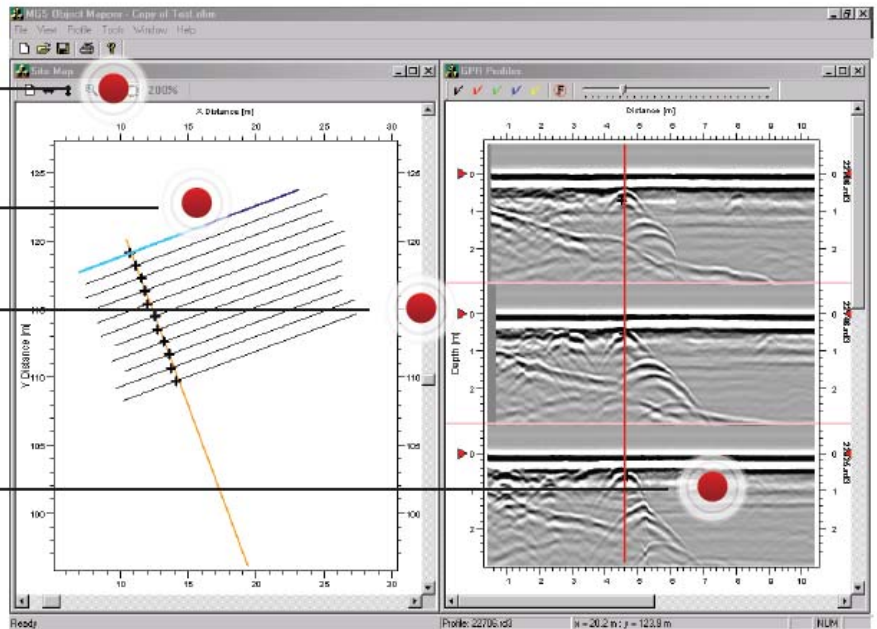
2. Grid generated in a map



3. Export and print options



4. Visualization of several profiles simultaneously



The Object Mapper Program is visualization software dedicated for GPR data. The software is best used with Object Mapper projects created with the XV Monitor or the CX System.

The Object Mapper is developed to easily handle and interpret radar profiles acquired with the XV Monitor or the CX System, where a number of radar profiles are linked to a common baseline.

• **The Object Mapper software offers unique integration of field-data and interpretation.**

The Object Mapper includes features such as the visualization of several radar profiles simultaneously, filtering of data, and a report editor to mark and visualize objects on a map. Several different types of markers can be defined to illustrate the position of pipes, single objects etc.

• **The user-friendly Object Mapper software allow one-click import of projects (multiple number of profiles) and direct positioning.**

Built in data collection management in the XV Monitor or in the CX System allows for marking of a user defined baseline at any point in your profiles. This even applies to non-parallel profiles. Profiles uploaded from the XV Monitor and from the CX System into the Object Mapper software are automatically adjusted to the baseline and thus perfectly aligned for profile to profile target picking.

• **The cost-effective Object Mapper software combines multiple file interpretation and top view presentation.**

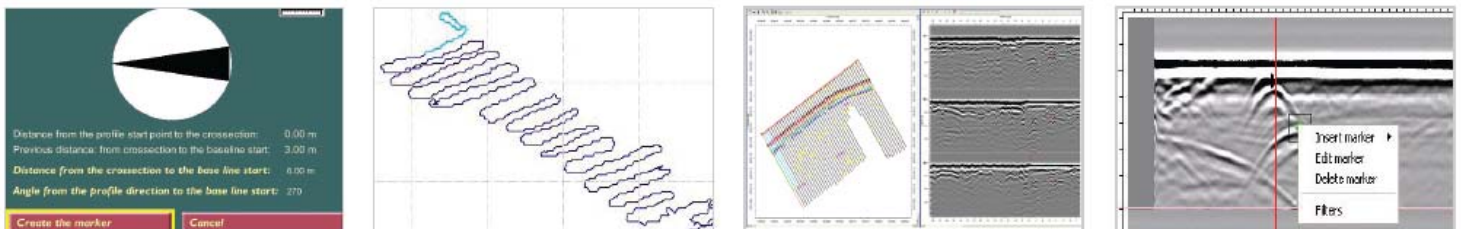
The software eliminates the task of single profile interpretation which is time consuming, inefficient and very costly.

Software Highlights

Picking GPR targets and generating a detailed map is as simple as clicking a mouse with the Object Mapper software. It displays up to ten GPR profiles at once allowing the user to pick targets from multiple profiles. These targets can be marked out with some of the seven available markers.

The software offers:

- Simultaneous filtering and interpretation of a number of GPR profiles.
- Instant overview of marked object or features on a site map.
- Simultaneous viewing of up to ten (10) GPR profiles at once.
- Text comments on individual markers.
- Selective hide and show of different marker types, for easier interpretation.
- Import of several baselines, as well as all the GPR data.
- Baseline start and end points are easily and freely adjustable.
- Easy export of the resulting map to your favorite CAD or GIS as .dxf files. Markers may also be exported in ASCII format with both position and depth information.
- Printout of interpreted results, site map or GPR data.
- Robust filtering capabilities with time gain, band pass, background removal, and much more.
- Possibilities to customize the markers to distinguish between different types of utilities, geological or archaeological features.
- Semi-automatic positioning of individual GPR profiles along a baseline.



Object Mapper Software in brief

The Object Mapper software, where a simple interface is creating a user friendly, powerful and efficient software for identifying and displaying objects in a large set of GPR profiles. The built in data acquisition management, Object Mapper project, in the XV Monitor or the CX System allows for the marking of a user defined baseline at any point in your GPR profiles. These projects with the associated settings are later easily uploaded from the XV Monitor or CX System into the Obejct Mapper software for visualization and further processing