

## RAMAC ProEX Control Unit



Ethernet communications  
100Mbit/s



Battery or external 12V supply



Antenna modules



Expansion unit

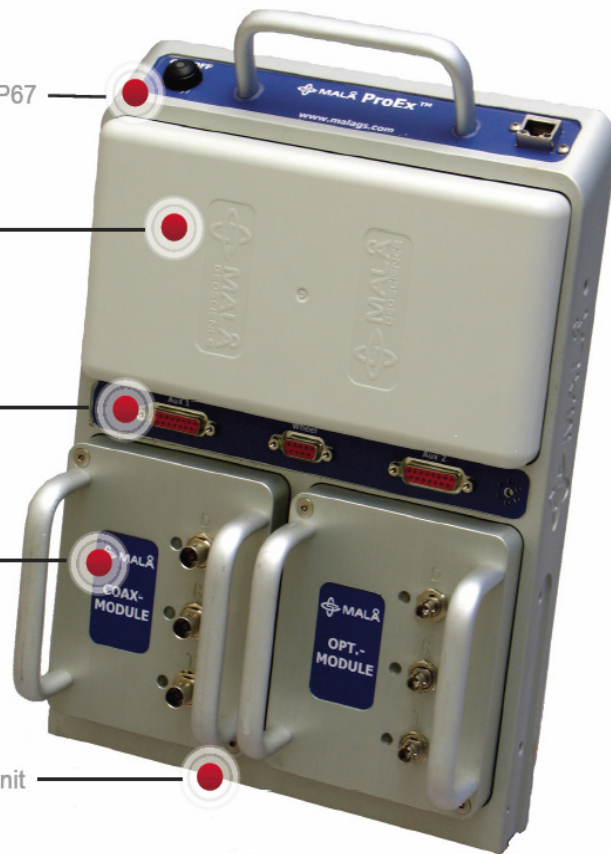
1. Field rugged Control Unit – IP67

2. 12V Li-ion battery

3. Auxiliary connectors/ ports

4. Antenna modules

5. Connectors for Expansion Unit



## Professional Explorer (ProEx™) System

Ground Penetrating Radar for Structural Investigations

Terraplus is pleased to introduce the Professional Explorer (ProEx) System; a modular, full-range Ground Penetrating Radar (GPR) system designed to meet the needs of the advanced professional user. At the heart of this new system is the ProEx Control Unit. Designed on a completely new technical platform, the ProEx is the most versatile control unit we are now offering and replaces the World famous RAMAC/GPR CUII as the new high-end full range system.

GPR offers a practical, reliable and most importantly non-destructive solution for subsurface geophysical and geotechnical investigations. The ProEx is fully compatible with CUII's broad range of antennas and offers a flexible and versatile approach to detecting subsurface targets and geological layers accurately, efficiently and in real-time.

This modular design approach offers you a flexible and affordable choice to system configuration. You need only invest in what you need today; however, as your needs change, so can your GPR system.

## Main Applications

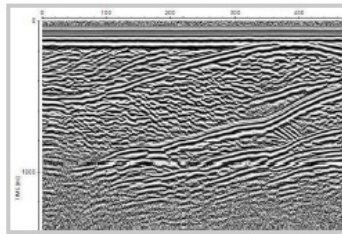
Whatever your application, the ProEx™ can assist in providing solutions to your subsurface investigation needs in areas such as:

- Archeology & Forensics
- Borehole
- Concrete NDT & Civil Engineering
- Environmental
- Geological/Mining
- Ice & Snow Measurements
- Research
- Road & Transportation
- Utility Detection & Mapping
- And more!

## Specific Features:

Terraplus is pleased to introduce this GPR third-generation digital control unit. The new ProEx boasts a list of practical features rolled into one rugged design suitable for advanced and professional users.

- Modular Design
- Dual hardware channel (4 data channels) as standard
- Multi-channel: max. 8 antennas (16 data channels)
- Supports all CUII antennas
- Supports Array configurations
- Ethernet communications
- Pulse Repetition Frequency (PRF): 100 KHz (upgradeable to 1 MHz)
- 100 KHz PRF per hardware channel



## System Configuration:

The ProEx is a modular digital radar control unit with multi-channel functionality; the base unit comes standard with two hardware channels (4 data channels). This allows connection of two separate antennas for simultaneous data collection whilst also providing a third “virtual antenna”.

By adding optional expansion units, the system can be expanded to eight hardware channels (16 data channels) to operate up to eight individual antennas.

A choice of three antenna modules (coax, optical and high frequency) allows the user to connect any of our antenna in various configurations, for single, dual or multi-antenna operation. Thus enabling a wide range of advanced measurements to be carried out.

## Technical Specification

<b>Power supply:</b>	Li-Ion 12V battery
<b>Operating time:</b>	5 h nominal, pending configuration
<b>Operating temp:</b>	-20° to +50°C / 0° to 120 °F
<b>Environmental:</b>	IP67
<b>Dimensions (cm):</b>	32.5 (h) x 22.2 (w) x 4.2 (d)
<b>Weight:</b>	1.9 kg

**Antennas:** The ProEx is fully compatible with the entire range of CUII antennas, the XV Monitor data acquisition platform and Windows based GroundVision<sup>1</sup> acquisition software.

A comprehensive technical specification is available on request.

<sup>1</sup> Requires a notebook PC