

# Easy Locator HDR

Terraplus is pleased to introduce the Easy Locator HDR (High Dynamic Range). The Easy Locator HDR is faster, easier to use, more powerful, delivers cleaner data with more detail and up to 20% better penetration depth than comparable systems.

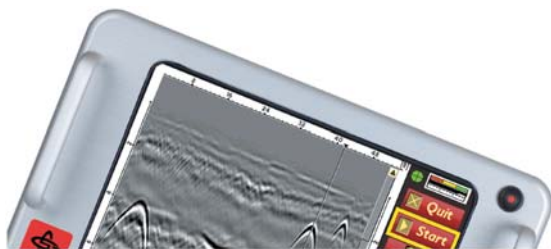


Advances in the design and construction of buried utilities have resulted in the ever increasing use of non-metallic materials. Locate professionals know the difficulties associated with non-metallic utilities and that conventional locating tools are insufficient in finding them. Ground penetrating radar is the only technology available that neither requires a physical connection to the utility, or the need to rely on its electromagnetic (EM) radiation.

The Easy Locator series was designed to meet the requirements from the locating industry and has become the standard ground penetrating radar utility locating tool.

Although the Easy Locator HDR looks similar to its predecessor, it has major improvements in data quality, power management and speed, while maintaining all of its appreciated features and functions. The Easy Locator's well-known look and feel has been kept intact, but its user interface is now simpler and clearer. Furthermore, the collected data is of unprecedented quality and the maximum continuous run-time is now at 14 hours.

The new Easy Locator HDR also includes a built-in DGPS receiver, simplifying positioning of identified utilities. Maybe the most important aspect of the new Easy Locator HDR is that its price structure has been kept at the same level as before, well below competitive and comparable products.



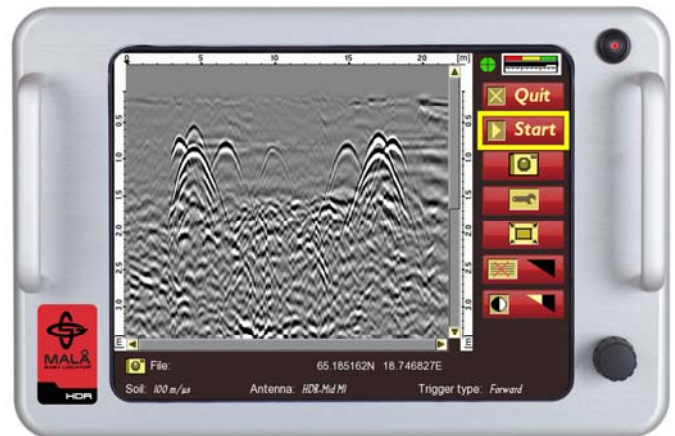
Built-in DGPS

The Easy Locator was the first ground penetrating radar system specifically designed for only one application area, to detect buried utilities. With everything built into one unit, designed to deliver results immediately on site with an understandable and dedicated interface, the Easy Locator made ground penetrating radar measurements easier, more accessible and understandable. The Easy Locator HDR is the new improved market leader for ground penetrating radar utility detection.

The Easy Locator HDR is an **all-in-one** unit with a hinged shaft enabling the entire system to fit in the back of a standard station wagon for transportation between sites. The **(HDR)** high dynamic range antenna, **optimized for utility detection**, is ruggedized, sealed and shielded. A rough terrain cart (RTC) is also available for the Easy Locator HDR as an option.

The Easy Locator HDR monitor has excellent readability, even in direct sunlight, and the **keyboard-less** interface is controlled by a single turn-and-push dial. All sensitive parts of the system are carefully protected in a robust aluminum casing, weather protected and built to last through harsh environments and rough transports.

The Easy Locator HDR is **built to deliver** on site and its dedicated built-in software is tailored for utility detection and includes all necessary components from start to finish. The goal when designing and building the system was to make ground penetrating radar simpler, **cost effective** and more accessible to the utility market, hence the name, **The Easy Locator HDR**.



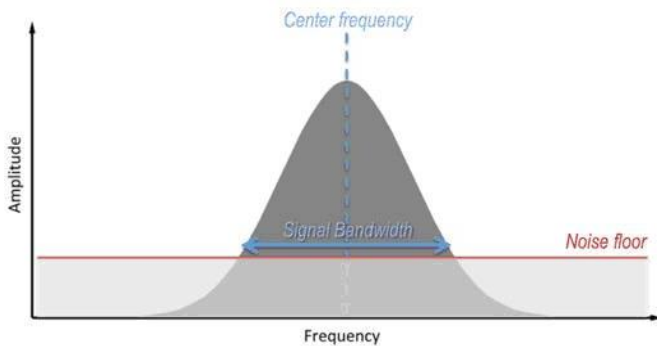
## Features and Accessories

- Ergonomic, compact and field rugged design
- Minimal setup time
- Simple, one-button, operation
- Multiple battery management, no swapping (up to 4 batteries)
- Real-time zoom (no 'depth window' setting necessary)
- Multiple language support (English, French, Portuguese, Spanish & more)
- Detects metallic and non-metallic utilities
- On-site marking of utilities and objects
- Back up cursor for quick and accurate utility marking
- Rough Terrain Cart as option

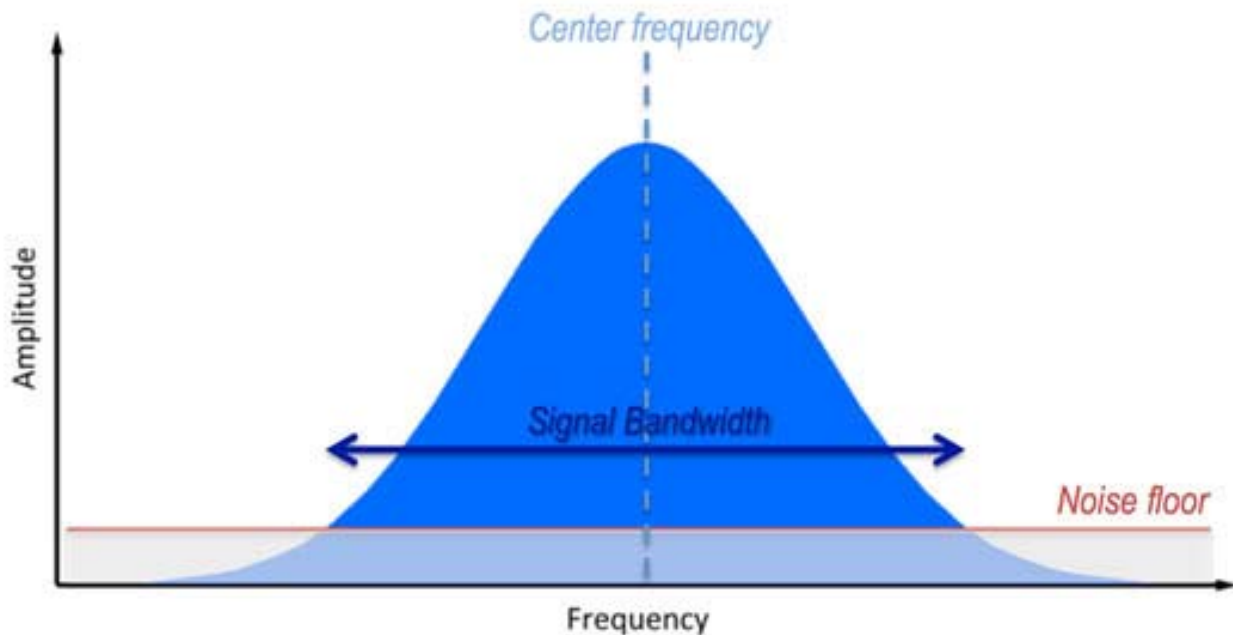
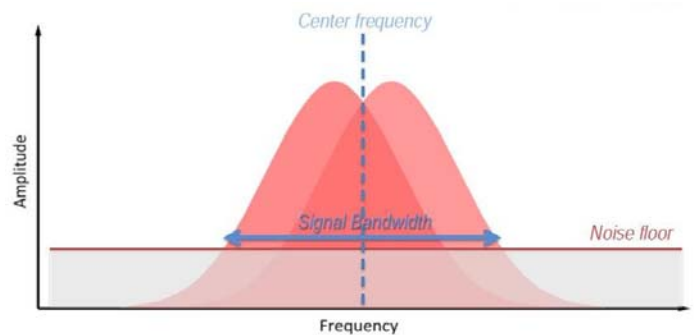
## HDR Technology Explained

High Dynamic Range (HDR) is based on modern real-time sampling technology and provides the Easy Locator HDR with significantly faster data acquisition rates, greater signal to noise ratio, and increased bandwidth. In practice, the Easy Locator HDR will deliver higher resolution data and better depth penetration than conventional GPR systems.

Typical conventional single channel GPR System  
- Normal noise level, normal bandwidth



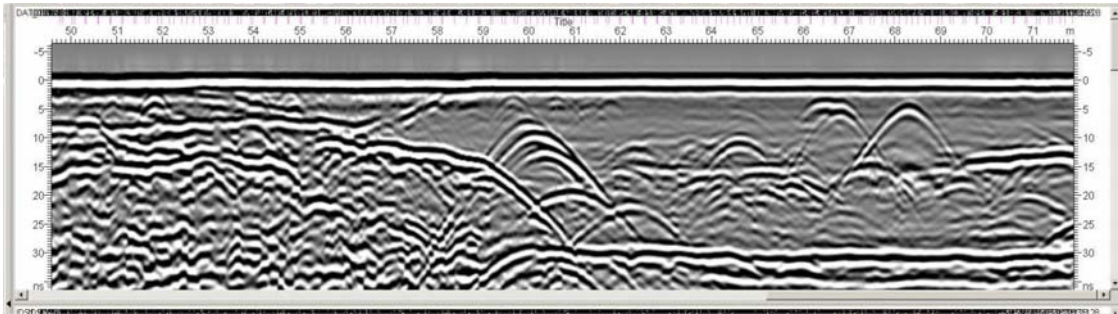
Typical conventional dual channel GPR System  
- Normal noise level, better bandwidth



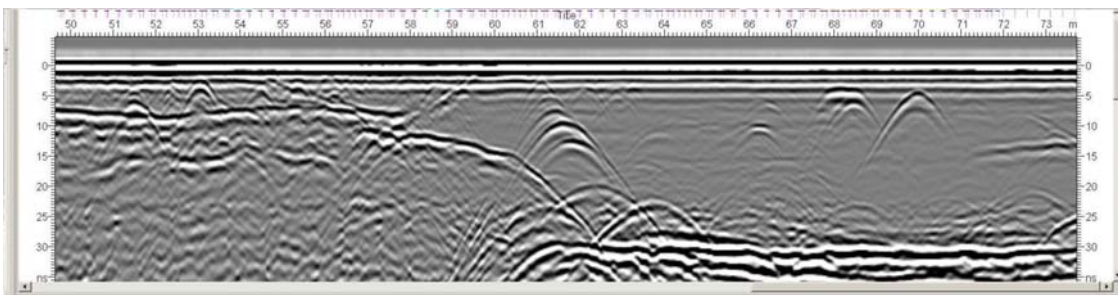
The Easy Locator HDR delivers unprecedented dynamic range and resolution. The HDR technology delivers a wide signal bandwidth that is further increased by the exceptional low noise floor.



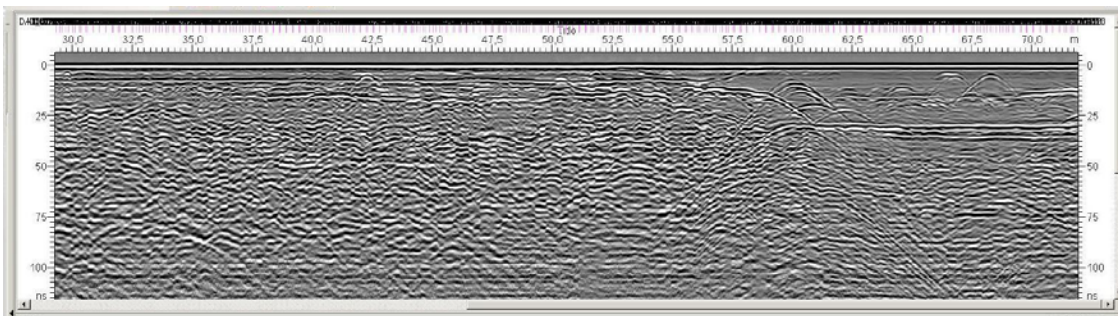
## Data Comparisons



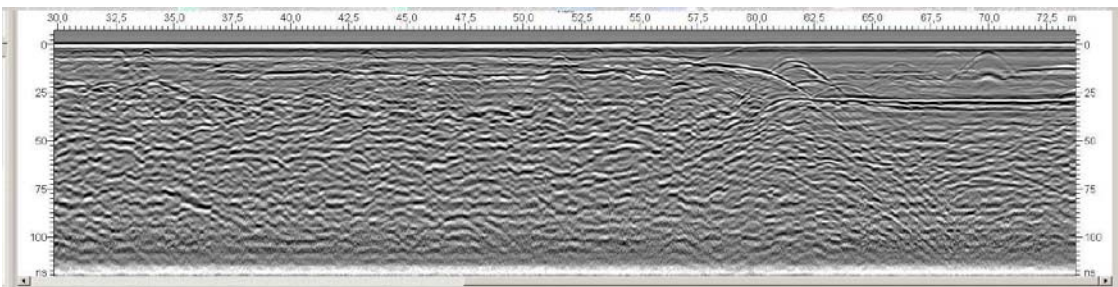
**Zoomed 450 MHz HDR**



**Higher  $f$  Antenna Output of a Competing Dual  $f$  Conventional GPR System**



**450 MHz HDR Antenna "Zoomed Out"**



**Lower  $f$  Antenna Output of a Competing Dual  $f$  Conventional GPR System**

## Technical Specifications

- Power Supply: Li-Ion 12V/8.7Ah battery
- System Power Consumption: 2.4A
- Continuous Operating Time: 14 hours (4 battery packs)
- Operating Temperature: -20° to +50°C or 0° to 120 °F
- Environmental: IP65
- Maximum Operating Speed: >25 km/h (>15 mph)
- Maximum Scan Rate: >1024 scans/sec. @ 700 samples
- Display: 10.4" Color TFT sunlight-readable Transmissive LCD
- Display Resolution: 1024 x 768
- Dimensions with Wheels: 67x47x19cm / 26"x19"x7" (excluding handle)
- Total System Weight: 18 kg / 40 lb
- Antenna: High Dynamic Range 450MHz Antenna
- DGPS (SBAS): Built-in, also supports external devices

