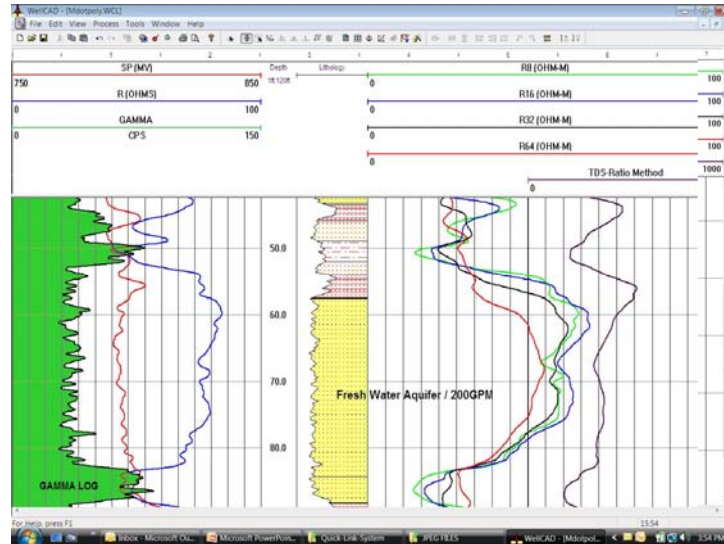


40GRP-1000 Gamma-Resistivity Probe

The 40GRP-1000 gamma-SP-SPR-Resistivity probe is ideal for slim line, one-pass, hydro geological studies, lithology work, uranium exploration, and general borehole formation data. The totally digital probe combination measures 16, 64 inch (0.4, 1.6 meter) normal resistivity, single point resistance, self-potential, and natural gamma.

This probe operates with the new Logger Suite Ver. 11 digital logging system. The normal resistivity measurements, single point resistance, and self-potential measurements are designed for surveying open (uncased) fluid filled boreholes. Gamma works in any borehole environment.



Specifications

Length:	87 inches (221 cm)
Diameter:	1.55 inches (40 mm)
Pressure Rating:	2000 psi (13.8 Pa)
Weight:	19.5 lbs. (8.8Kg)
Operating Temperature:	0 to 70 °C
Sensor:	Gamma: 0.875 x 3" NaI(Th) crystal
Accuracy:	See details above
Resolution:	See details above
Field Applications:	The 40GRP-1000 stand-alone geophysical logging tool has mostly applied to typical ground water applications, including aquifer thickness, lithology, and water quality estimates; however the tool is widely used in general geological applications, uranium exploration (calibrated gamma logs), shallow oil & gas work, etc.